

***Step 1 //** Mark the areas for the adhesive application on the wall and floor in 6 cm height and width.



***Step 2 //** Apply WAKOL MS 552 PVC and Rubber Adhesive with trowel notch TKB B1 in the area of the inner and outer corners.

Place and press on WAKOL AS 153 Sealing Corners, inner and WAKOL AS 154 Sealing Corners, outer.

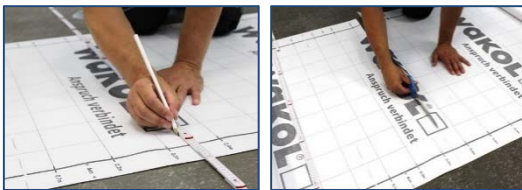
Flatten out surplus adhesive with a spatula.



***Step 3 //** Cut WAKOL AS 152 Sealing Tape to length with approx. 5 cm overlap on sealing corners.

Apply WAKOL MS 552 PVC and Rubber Adhesive in the marked floor and wall area.

Place and press on WAKOL AS 152 Sealing Tape. Flatten out surplus adhesive with spatula. Repeat the same procedure on the wall.

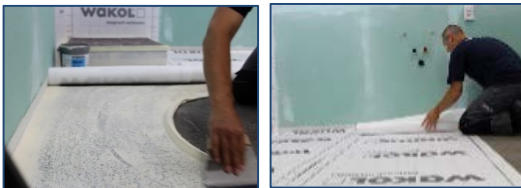


***Step 4 //** Mark and cut the WAKOL AS 151 Sealing Sheet for floor and wall areas.



***Step 5 //** Apply WAKOL MS 552 PVC and Rubber Adhesive with trowel notch TKB B1 to the wall and allow to air dry for approx. 20 minutes to increase the initial adhesion.

Apply WAKOL AS 151 Sealing Sheet and rub down bubble-free with a cork board. Lay the sheets against each other, do not overlap and rub down with a cork board until bubbles are eliminated.



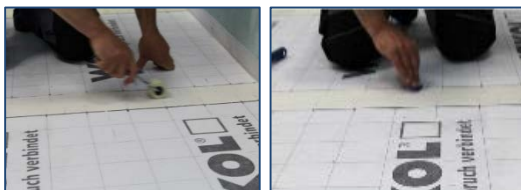
***Step 6 //** Apply WAKOL MS 552 PVC and Rubber Adhesive with trowel notch TKB B1 to the floor and allow to air dry for approx. 20 minutes to increase the initial adhesion. Apply WAKOL AS 151 Sealing Sheet.

Lay the sheets against each other, do not overlap and rub down with a cork board until bubbles are eliminated.



***Step 7 //** Apply WAKOL MS 552 PVC and Rubber Adhesive to the marked area left and right of the sealing sheets at sheet joints and allow to air dry for at least 20 minutes.

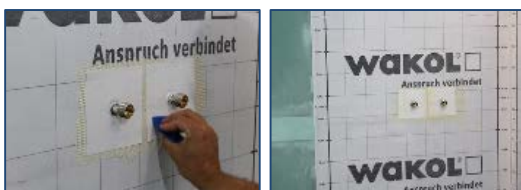
Insert WAKOL AS 152 Sealing Tape and press on bubble-free. Flatten out surplus adhesive with spatula.



***Step 8 //** Apply WAKOL MS 552 PVC and Rubber Adhesive in the area of installation openings on the wall and allow to air dry for at least 20 minutes.

Insert sealing sleeves and press on bubble-free. Finally, remove any excess and leaking adhesive with the spatula.

Please always observe the technical information before processing.



**Water march - with the
Wakol Sealing System!**

